

OPERATION INSTRUCTION

1. LOCK

Press "■" on the remote controller once with the direction light flash once, and then the central control door lock will be locked. 30 seconds negative (-) output for window roll-up. The LED will automatically flash.

2. UNLOCK

Press "■" on the remote controller once with the direction light flash twice, and then the central control door lock will be unlocked.

3. TRUNK RELEASE

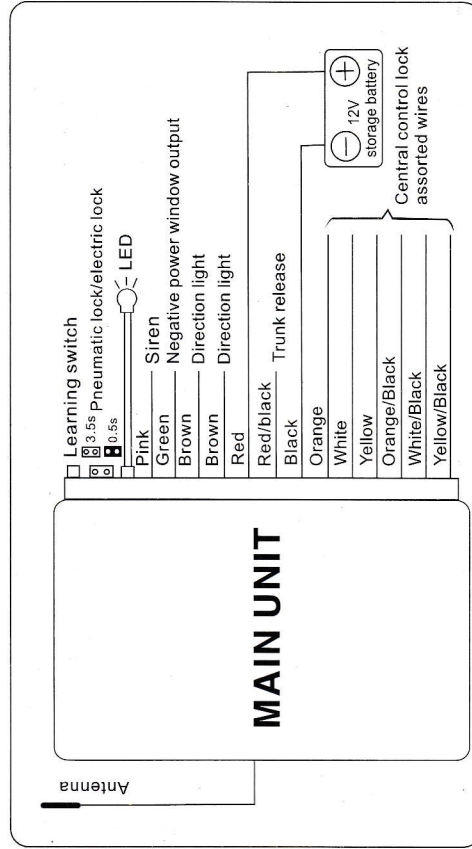
Long press "■" for 2.5 seconds, the direction light will flash three times and trunk release simultaneously.

4. CAR FINDING

In arming, press "■" once, direction light flash three times, for finding the car.

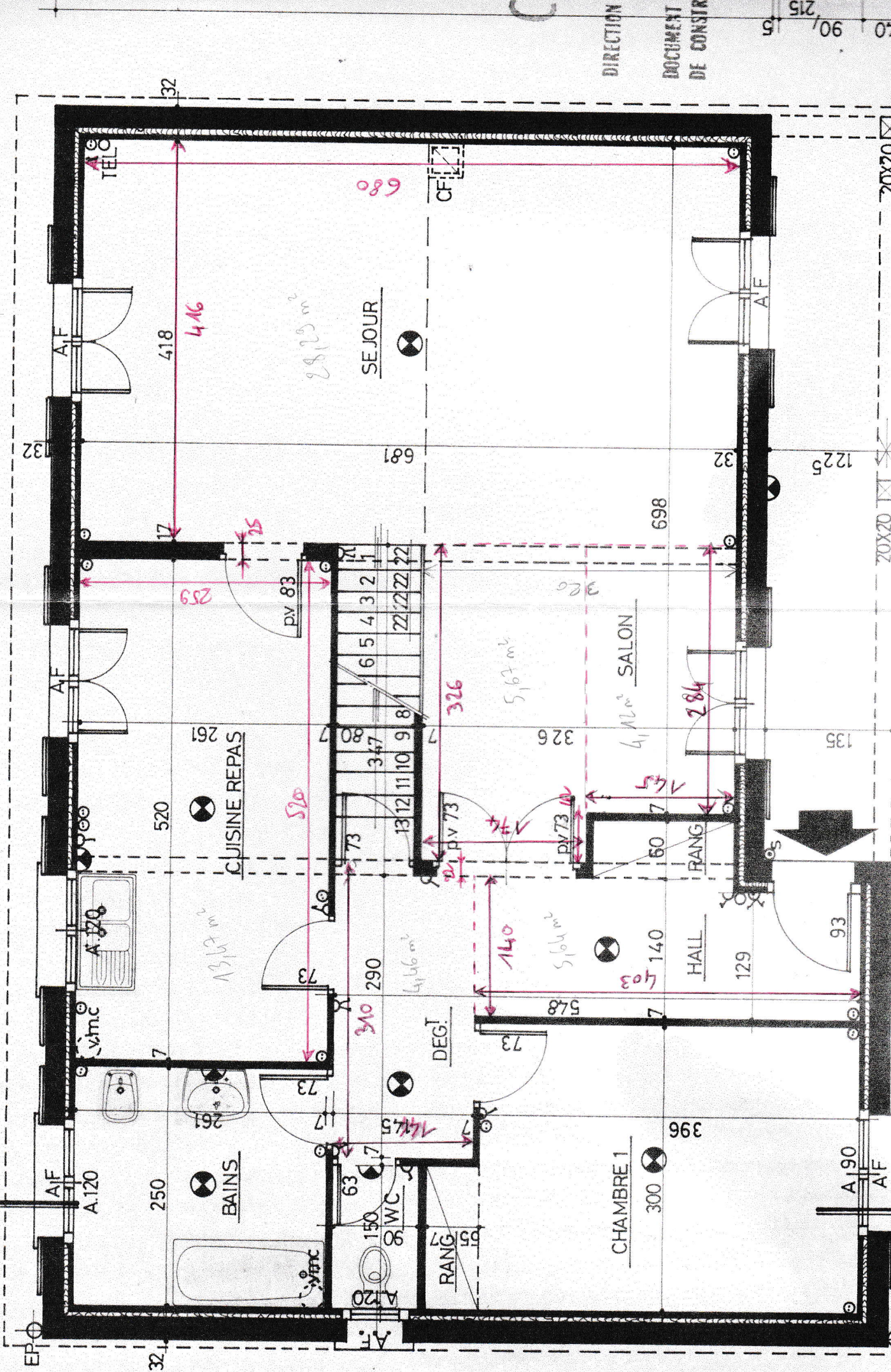
5. pneumatic lock/electric lock can be selected just like diagram display

Circuit diagram of keyless entry system



100 120/95 140 140 120/95 140 235 120/215 181

61,65 m²



DIRECTION DOCUMENT DE CONSR

50 90 215

20x20 1225

135

93

A.90 A.F.

32